



1300 HIGGINS

— PARK RIDGE, IL —

BUILDING RENOVATIONS COMPLETE

SUITES AVAILABLE FROM 1,100 - 9,660 RSF



All new
restrooms



New common
corridors



Updated
elevator cabs



New ceilings and
LED lighting fixtures



- Less than 5 minute walk to Cumberland Ave Blue Line stop
- Chicago Marriott O'Hare next door
- Easy access to O'Hare Airport & MB Park in Rosemont
- Walk to Mariano's around the corner from the building

Exclusive Leasing Agent:

BA BRADFORD
ALLEN

Dan Fernitz
847 290 8688
dfernitz@bradfordallen.com

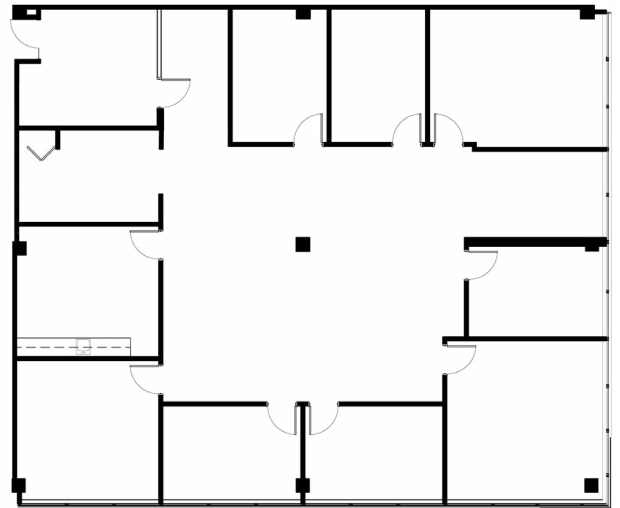
Norm Murdoch
630 239 4082
nmurdoch@bradfordallen.com



1300 HIGGINS

PARK RIDGE, IL

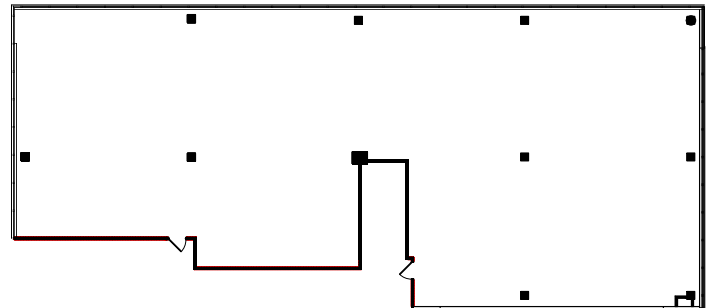
Suite 209 // 3,650 SF



[▶ VIEW VIRTUAL TOUR](#)

Suite 303 // 7,061 SF

Divisible to 3,000 SF



[▶ VIEW VIRTUAL TOUR](#)

Exclusive Leasing Agent:

BA BRADFORD
ALLEN

Dan Fernitz
847 290 8688
dfernitz@bradfordallen.com

Norm Murdoch
630 239 4082
nmurdoch@bradfordallen.com