



1585 BEVERLY COURT

PRIME

INDUSTRIAL LEASE
OPPORTUNITY

SUITE 117 | 3,000 RSF
ASKING RATE: \$11.00/RSF NNN



SUITE FEATURES

- Class A building
- 24' clear height
- (1) 8' x 12' office
- 2 bathrooms
- Sprinklers
- Fresh paint
- (1) 14' drive-in door
- Power 150-400a 3p
- Air conditioning



AREA AMENITIES

- Near I-88
- Planned development district
- Very open to business uses
- Close proximity to food and shopping

exclusive leasing agent

BA BRADFORD
ALLEN

Jim Higdon
630 869 5227
jhigdon@bradfordallen.com

Norm Murdoch
630 239 4082
nmurdoch@bradfordallen.com

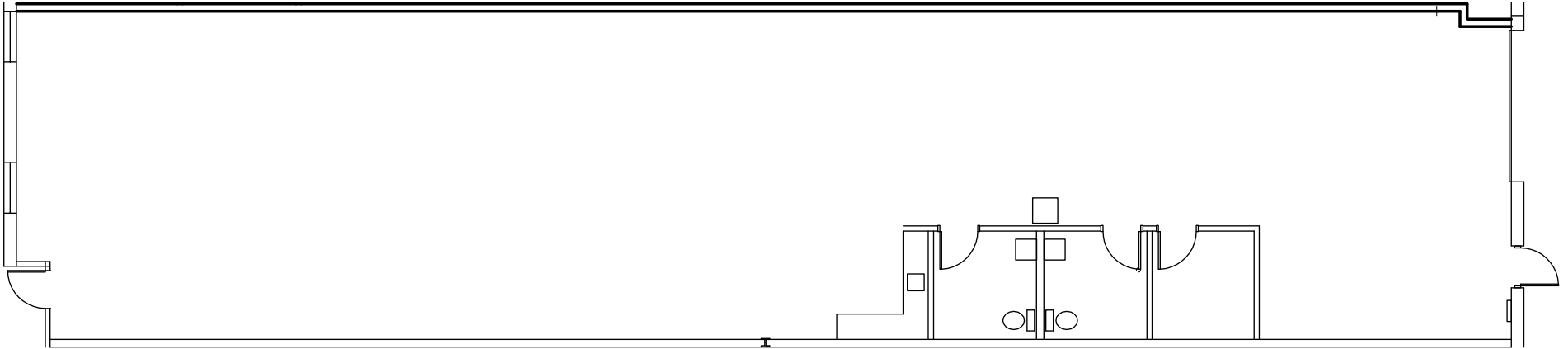
George Stanton
630 869 5230
gstanton@bradfordallen.com

For more information or to arrange a tour, please contact:

The information contained herein was obtained from sources deemed reliable; however, it has not been independently verified, and no warranties, express or implied, are made as to the accuracy thereof. Any interested parties should have the experts of their choice inspect the property and verify all information.

1585 BEVERLY COURT

SUITE 117 | 3,000 RSF



SUITE FEATURES

- Class A building
- 24' clear height
- (1) 8' x 12' office
- 2 bathrooms
- Sprinklers
- Fresh paint
- (1) 14' drive-in door
- Power 150-400a 3p
- Air conditioning

exclusive leasing agent

BA BRADFORD
ALLEN

Jim Higdon
630 869 5227 | jhigdon@bradfordallen.com

Norm Murdoch
630 239 4082 | nmurdoch@bradfordallen.com

George Stanton
630 869 5230 | gstanton@bradfordallen.com

For more information or to arrange a tour, please contact: