

**IMMEDIATE OCCUPANCY**



**162**

**W. HUBBARD ST.**

**FULL-FLOOR  
SPEC SUITE**

**5TH FLOOR  
SPEC SUITE  
READY**

**BA** BRADFORD  
ALLEN

FOR MORE INFORMATION OR TO ARRANGE A TOUR PLEASE CALL:

**CRAIG NADBORNE**  
+1 312 994 5798  
cnadborne@bradfordallen.com

**MICHAEL FLINCHBAUGH**  
+1 312 741 8121  
mflinchbaugh@bradfordallen.com



W. HUBBARD ST.

# SPEC SUITE PHOTOS



FOR MORE INFORMATION OR TO ARRANGE A TOUR PLEASE CALL:

**BA** BRADFORD  
ALLEN

**CRAIG NADBORNE**  
+1 312 994 5798  
cnadborne@bradfordallen.com

**MICHAEL FLINCHBAUGH**  
+1 312 741 8121  
mflinchbaugh@bradfordallen.com



**HARDWOOD  
FLOORS THROUGHOUT**



**TENANT  
CONTROLLED HVAC**



**OPERABLE WINDOWS  
FACING SOUTH AND WEST**



**12' OPEN CEILINGS**



**PLENTIFUL ACCESS TO  
PUBLIC TRANSIT**

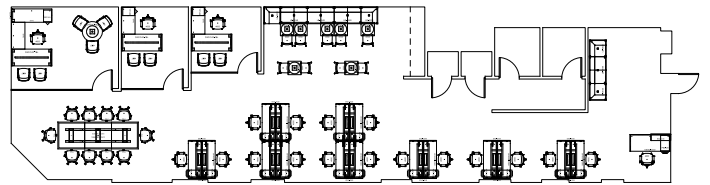
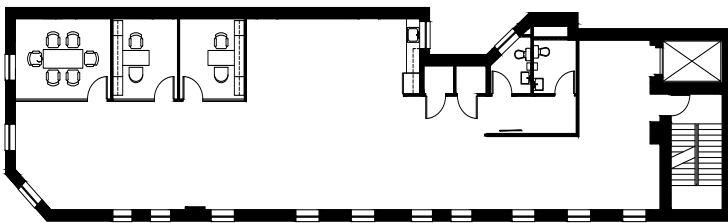


**WALKING DISTANCE  
TO RESTAURANTS**

# NEW SPEC SUITE

**SUITE 500 // 3,140 RSF**

## ALTERNATIVE CONCEPTUAL PLAN



**CONCEPTUAL PLANS: FURNITURE ADDED FOR PRESENTATIONAL PURPOSES. TENANT TO SUPPLY FURNISHING.**

**VIEW VIRTUAL TOUR**