

IMMEDIATE OCCUPANCY



162

W. HUBBARD ST.

**FULL-FLOOR
SUITE**

**OVER
3,000 RSF**

BA BRADFORD
ALLEN

FOR MORE INFORMATION OR TO ARRANGE A TOUR PLEASE CALL:

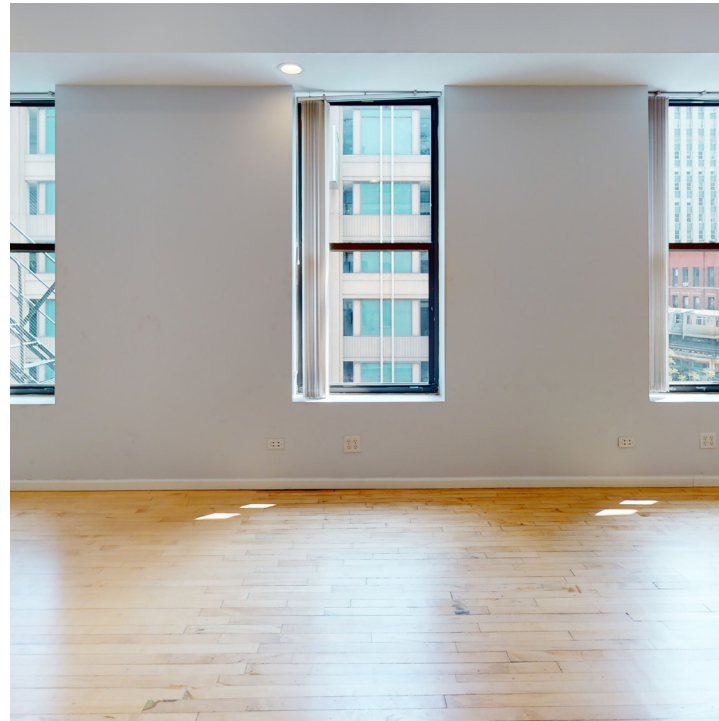
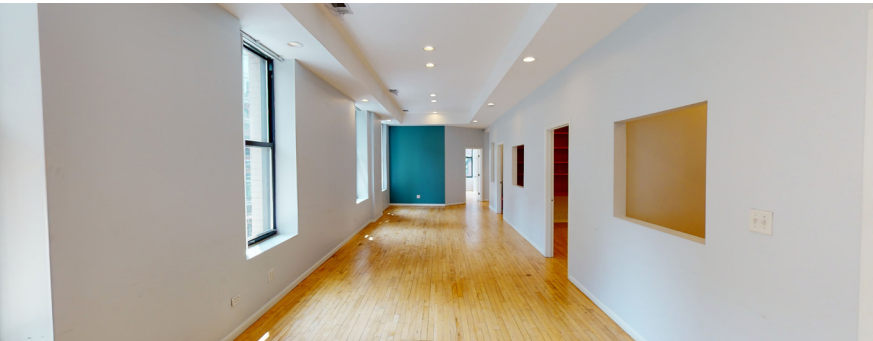
CRAIG NADBORNE
+1 312 994 5798
cnadborne@bradfordallen.com

MICHAEL FLINCHBAUGH
+1 312 741 8121
mflinchbaugh@bradfordallen.com



W. HUBBARD ST.

SUITE 400 PHOTOS



FOR MORE INFORMATION OR TO ARRANGE A TOUR PLEASE CALL:

BA BRADFORD
ALLEN

CRAIG NADBORNE
+1 312 994 5798
cnadborne@bradfordallen.com

MICHAEL FLINCHBAUGH
+1 312 741 8121
mflinchbaugh@bradfordallen.com



**HARDWOOD
FLOORS THROUGHOUT**



**TENANT
CONTROLLED HVAC**



**OPERABLE WINDOWS
FACING SOUTH AND WEST**



12' OPEN CEILINGS



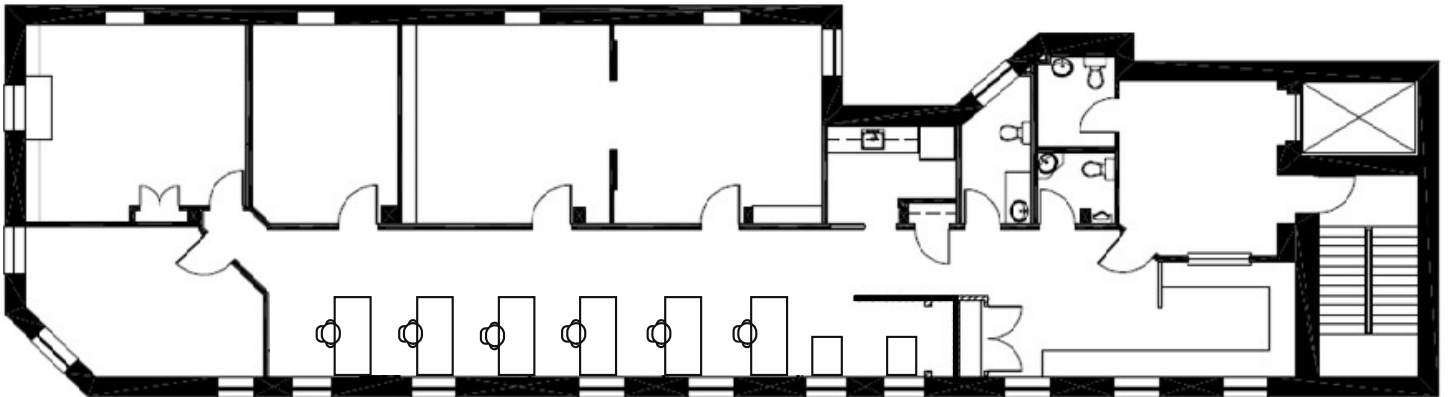
**PLENTIFUL ACCESS TO
PUBLIC TRANSIT**



**WALKING DISTANCE
TO RESTAURANTS**

SECOND GENERATION SUITE

SUITE 400 // 3,140 RSF



FURNITURE IS CONCEPTUAL. TENANT TO PROVIDE THEIR OWN FURNISHINGS

VIEW VIRTUAL TOUR