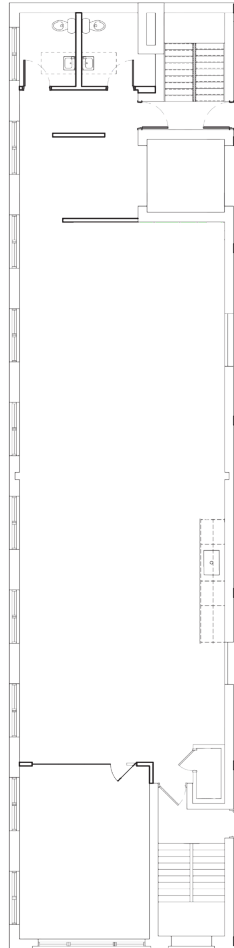




**SUITE 2W**  
**2,633 RSF**



### SUITE FEATURES

- Fully built out timber loft with 12' high ceilings
- Great natural light, from west and south windows
- Landlord will provide T.I. \$'s to retrofit to a new Tenant's use
- 1 PO / Conference room: approximately 12' x 18'
- Open area for cubicles
- 2 in-suite restrooms
- Galley kitchenette



EXCLUSIVE LEASING AGENT

**BA** BRADFORD  
ALLEN

**FOR MORE INFORMATION OR TO ARRANGE  
A TOUR, PLEASE CONTACT:**

**CRAIG A. NADBORNE**  
312 994 5796 [cnadborne@bradfordallen.com](mailto:cnadborne@bradfordallen.com)

**MICHAEL FLINCHBAUGH**  
312 741 8121 [mflinchbaugh@bradfordallen.com](mailto:mflinchbaugh@bradfordallen.com)