



595

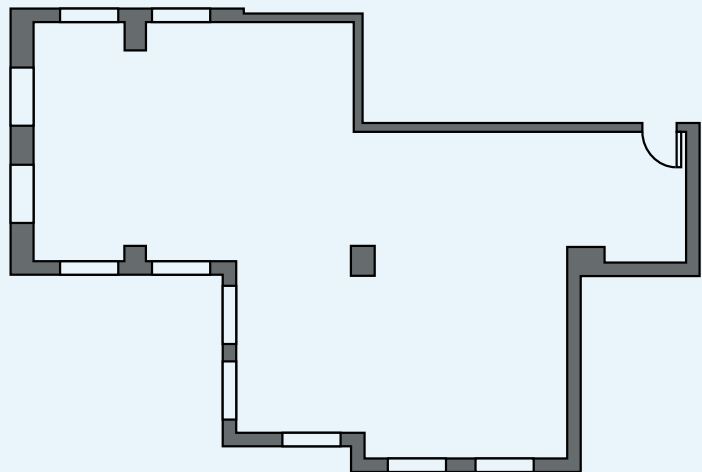
MADISON AVE

PLAZA DISTRICT SUBLEASE

SPACE NOTES

- Recently built with 13 workstations, 2 phone booths, wet pantry, and 2 breakout areas
- Delivered fully furnished and wired
- Features good views and 3 sides of natural light
- Direct elevator presence

FLOORPLAN



AVAILABILITY

Partial 20th Floor

SIZE

2,274 RSF

TERM

Through July 2024



FOR MORE INFORMATION, PLEASE CONTACT:

BA BRADFORD
ALLEN

GLENN ISAACSON
President, New York Region
gisaacson@bradfordallen.com

TONY BUILDER
Associate, Realty Services
tbuilder@bradfordallen.com
+1 212 593 7106

MATTHEW EZERSKY
Associate, Realty Services
mezersky@bradfordallen.com
+1 212 593 7109