

THE ICONIC DESIGN BY ACCLAIMED ARCHITECT HELMUT JAHN



750

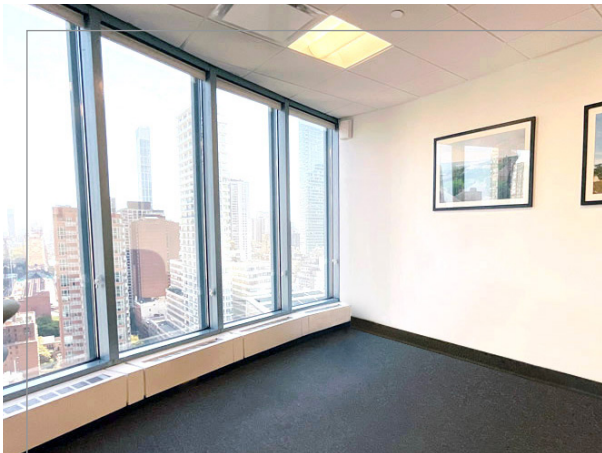
LEXINGTON
INTERNATIONAL PLAZA

BA BRADFORD
ALLEN

NEW YORK, NY

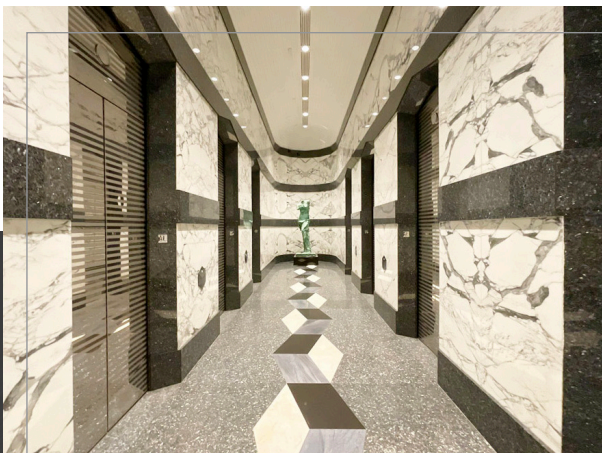


UPGRADE YOUR PERSPECTIVE



Floor-to-ceiling windows offer abundant natural light and exceptional views in every direction.

- Excellent location in the Plaza District with skyline prominence
- Exceptional accessibility, retail, and dining
- Spacious wrap-around plaza
- Enter the building through an elegantly designed marble lobby



NEAR **BLOOMBERG,**
CANTOR FITZGERALD, CITADEL,
ESTEE LAUDER, & BLACKSTONE



CLOSE PROXIMITY TO
4, 5, 6, N, R, W
TRAINS



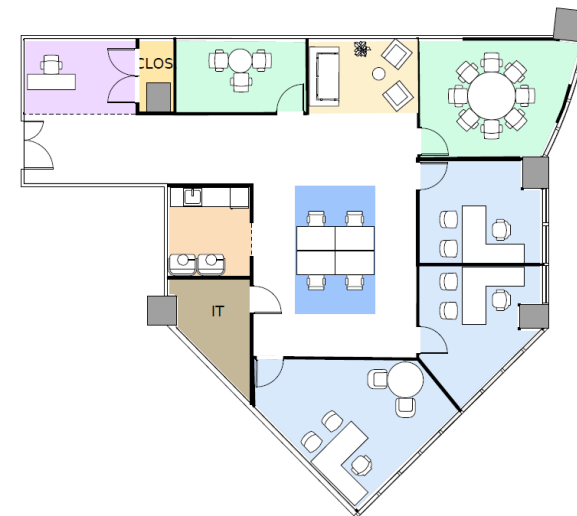
TENANT
IMPROVEMENT
WORK AVAILABLE

AVAILABILITIES

FLOOR	SUITE	RSF
Partial 5th	503	1,970
Partial 15th	1500	3,378
Partial 16th	1601	1,553
Partial 16th	1603	2,411
Partial 17th	1703	1,275 LEASED
Partial 17th	1700	3,601
Partial 17th	1701	3,052
Partial 18th	1800	2,751
Partial 19th	1903	4,152
Partial 23rd	2301	2,654
Partial 23rd	2302	2,654 LEASED
Partial 23rd	2303	2,375
Partial 24th	2403	3,548
Partial 24th	2402	3,049

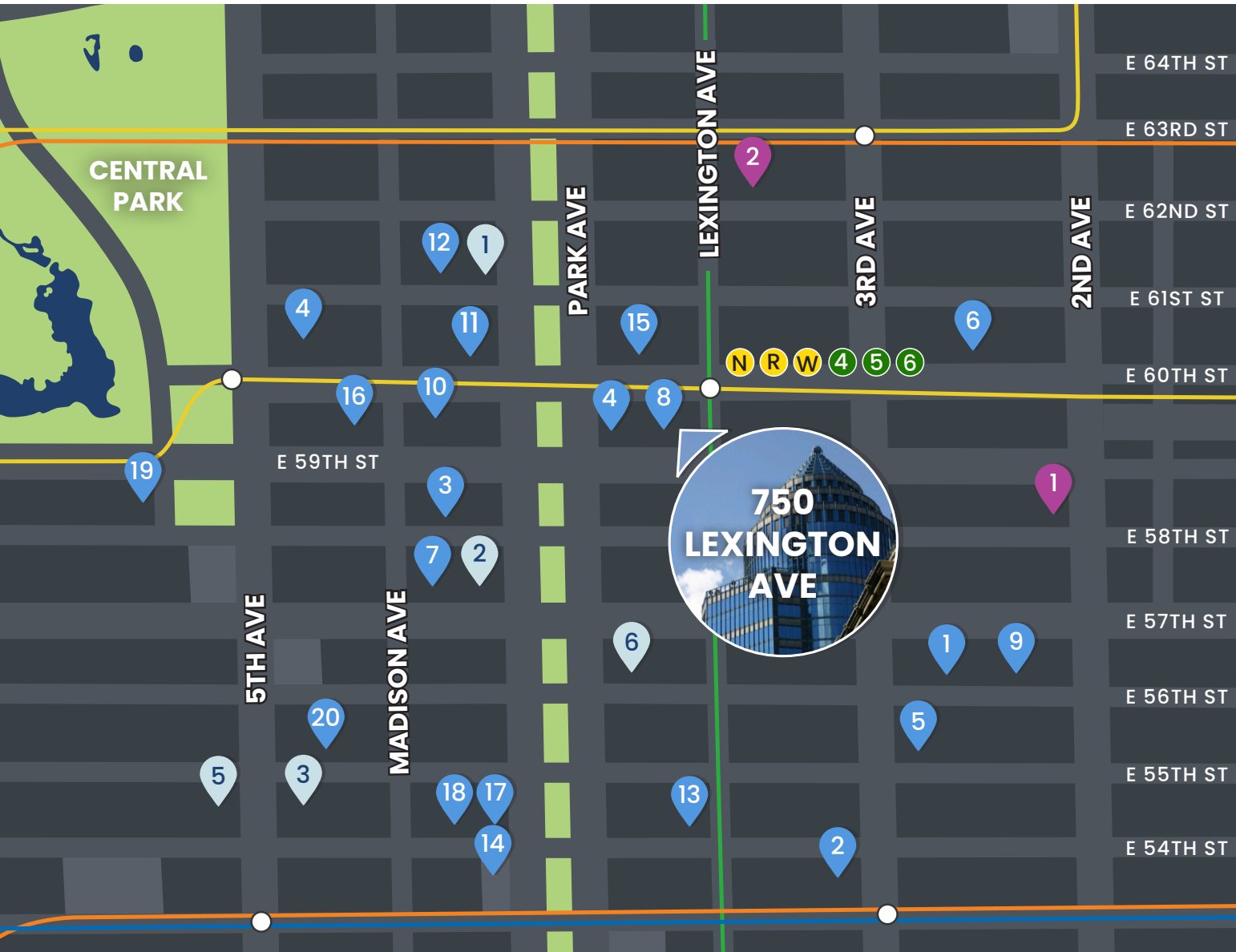


SUITE 1700 (TEST FIT)



SUITE 2302 (TEST FIT)

NEIGHBORHOOD



RESTAURANTS

1. Amata
2. Hillstone
3. LAVO
4. Piccola Cucina Uptown
5. PJ Clarke's
6. Serendipity
7. TAO
8. TBar
9. Whole Foods
10. Le Bilboquet
11. Il Mulino
12. Serafina
13. Bobby Van's
14. Casa Lever
15. The Bar Room
16. Avra Madison Estiatorio
17. Cellini
18. Nerai
19. Nobu
20. The Polo Bar

HOTELS

1. Loews Regency
2. Four Seasons Hotel
3. The St. Regis
4. The Pierre
5. The Peninsula
6. The Lombardy

GYMS

1. Crunch Fitness
2. Equinox (63rd)



BA BRADFORD
ALLEN



LEXINGTON
INTERNATIONAL PLAZA

FOR MORE INFORMATION
OR TO ARRANGE A TOUR,
PLEASE CONTACT:

GLENN ISAACSON

President, New York Region
gisaacson@bradfordallen.com
+1 212 593 7105

TONY BUILDER

Associate, Realty Services
tbuilder@bradfordallen.com
+1 212 593 7106