

THE ICONIC DESIGN BY ACCLAIMED ARCHITECT HELMUT JAHN



750

LEXINGTON  
INTERNATIONAL PLAZA

**BA** BRADFORD  
ALLEN

NEW YORK, NY

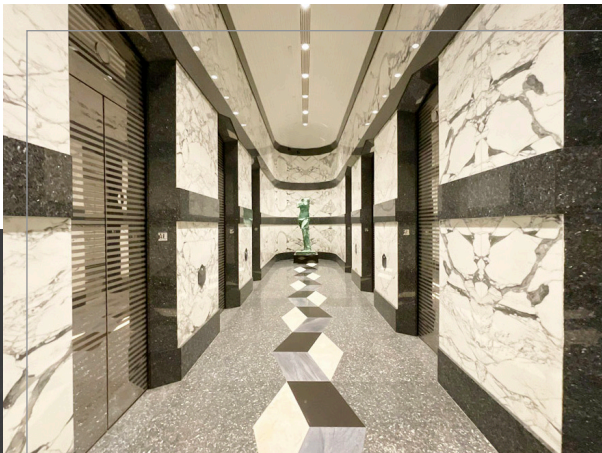


# UPGRADE YOUR PERSPECTIVE



Floor-to-ceiling windows offer abundant natural light and exceptional views in every direction.

- Excellent location in the Plaza District with skyline prominence
- Exceptional accessibility, retail, and dining
- Spacious wrap-around plaza
- Enter the building through an elegantly designed marble lobby



NEAR BLOOMBERG,  
CANTOR FITZGERALD, CITADEL,  
ESTEE LAUDER, & BLACKSTONE



CLOSE PROXIMITY TO  
4, 5, 6, N, R, W  
TRAINS



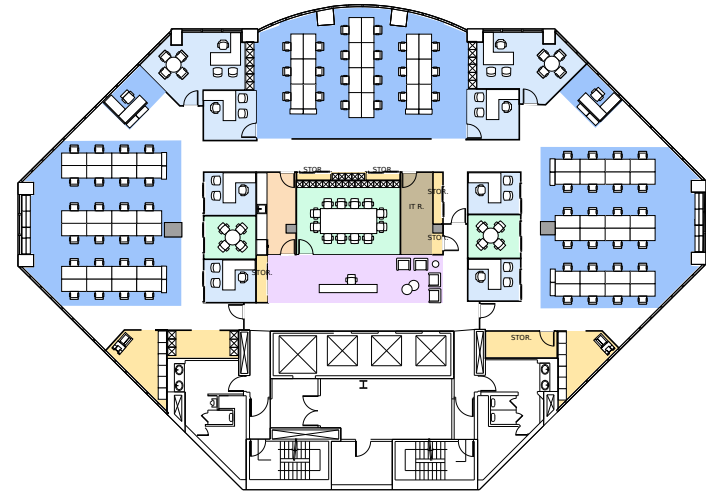
TENANT  
IMPROVEMENT  
WORK AVAILABLE

# AVAILABILITIES

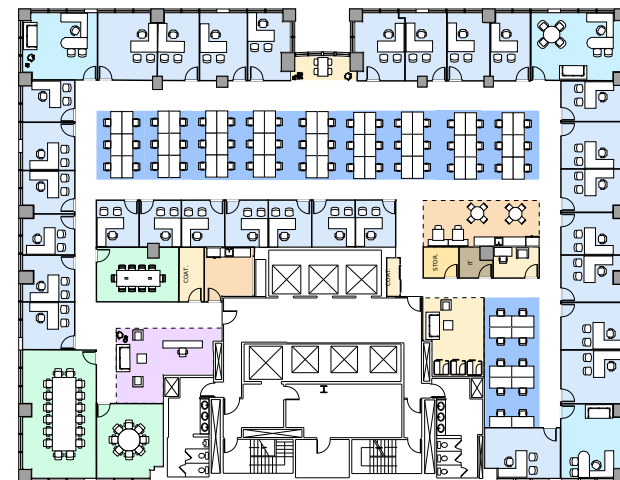
FLOOR	RSF	
Partial 25th	5,918	
Partial 24th	6,597	
Partial 23rd	7,683	
Partial 22nd	9,416	CONTIGUOUS 21,797 RSF
Entire 21st	12,381	
Partial 17th	6,653	
Partial 15th	6,307	
Entire 11th	13,500	CONTIGUOUS 31,746 RSF
Entire 10th	18,246	
Partial 5th	7,236	

Term: 5-10 years  
 Rate per RSF: Upon request  
 Possession: Immediate

Contiguous blocks of **21,797** & **31,746** RSF

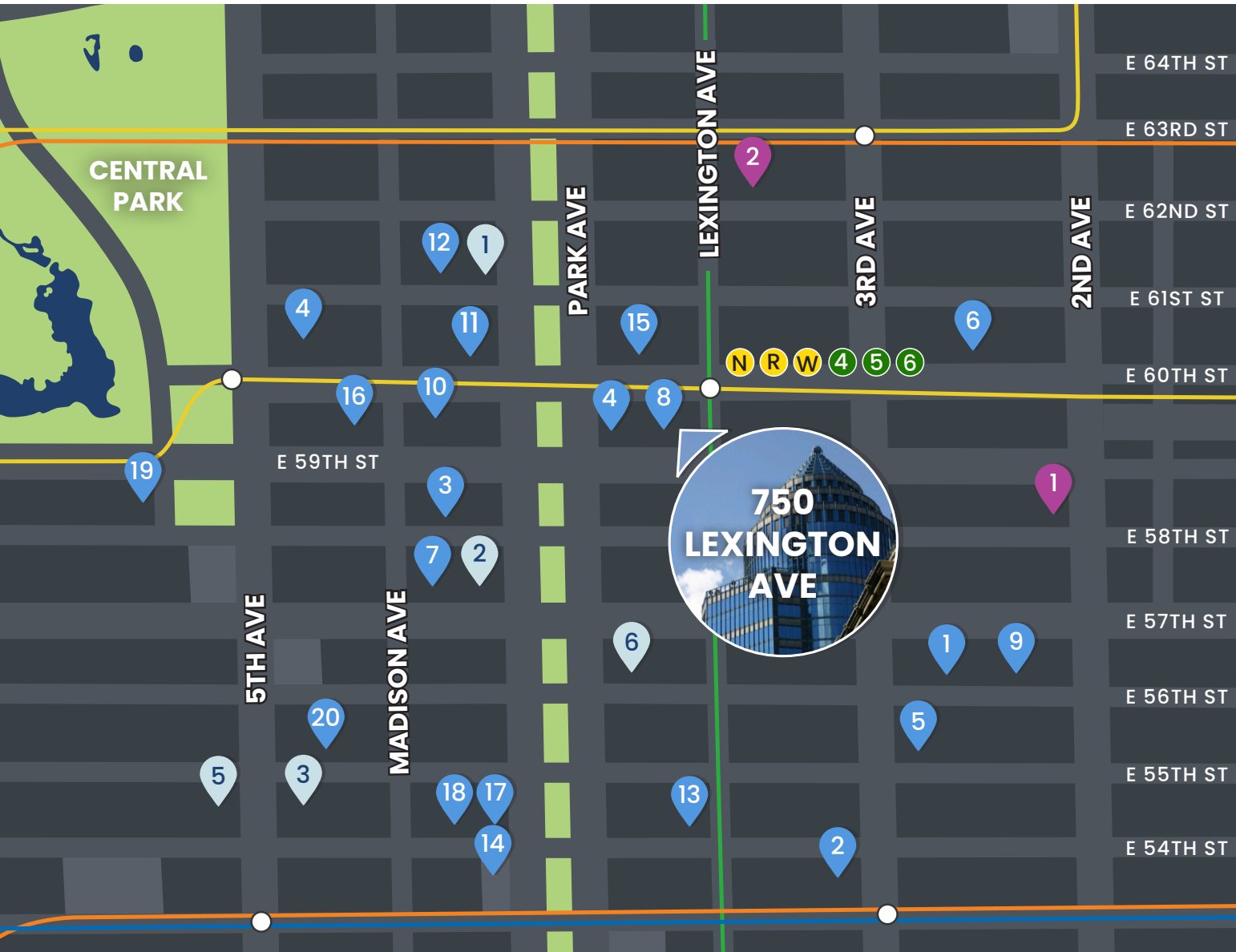


ENTIRE 21ST FLOOR (TEST FIT)



ENTIRE 10TH FLOOR (TEST FIT)

# NEIGHBORHOOD



## RESTAURANTS

1. Amata
2. Hillstone
3. LAVO
4. Piccola Cucina Uptown
5. PJ Clarke's
6. Serendipity
7. TAO
8. TBar
9. Whole Foods
10. Le Bilboquet
11. Il Mulino
12. Serafina
13. Bobby Van's
14. Casa Lever
15. The Bar Room
16. Avra Madison Estiatorio
17. Cellini
18. Nerai
19. Nobu
20. The Polo Bar

## HOTELS

1. Loews Regency
2. Four Seasons Hotel
3. The St. Regis
4. The Pierre
5. The Peninsula
6. The Lombardy

## GYMS

1. Crunch Fitness
2. Equinox (63rd)



**BA** BRADFORD  
ALLEN



LEXINGTON  
INTERNATIONAL PLAZA

FOR MORE INFORMATION  
OR TO ARRANGE A TOUR,  
PLEASE CONTACT:

**GLENN ISAACSON**

President, New York Region  
gisaacson@bradfordallen.com  
+1 212 593 7105

**TONY BUILDER**

Associate, Realty Services  
tbuilder@bradfordallen.com  
+1 212 593 7106