

90

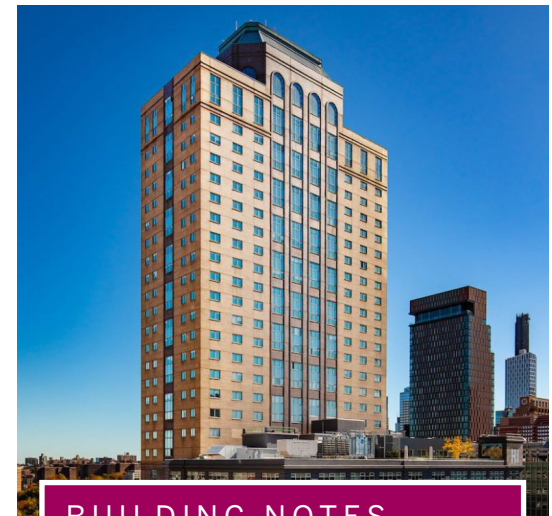
SANDS
STREET

UNIQUE OPPORTUNITY IN DOWNTOWN BROOKLYN



SPACE NOTES

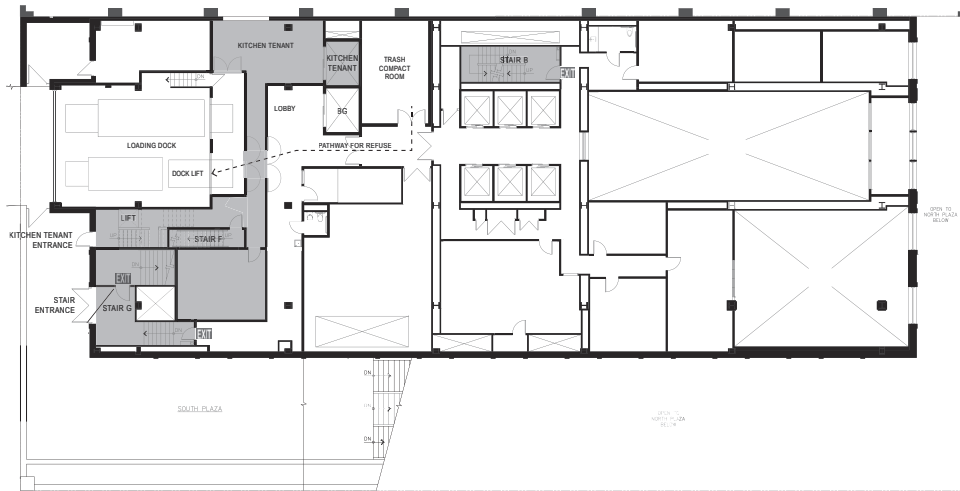
- Fully built commercial kitchen
- Potential to create private entrance
- Loading dock with automatic lift
- Two private freight elevators



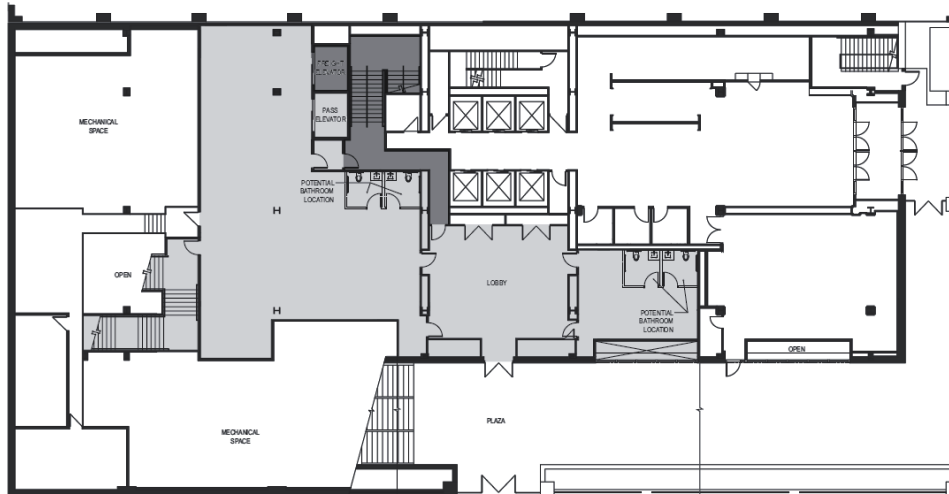
BUILDING NOTES

- Located next to Manhattan Bridge
- Close proximity to A and F subways
- One subway stop from Downtown Manhattan

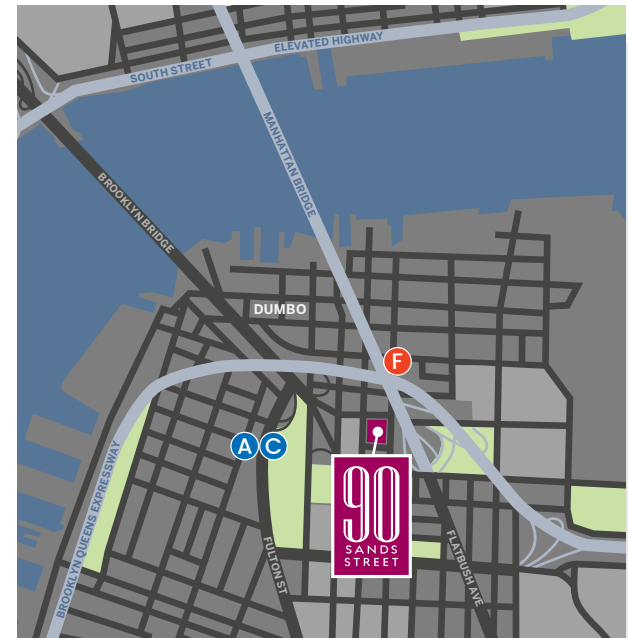
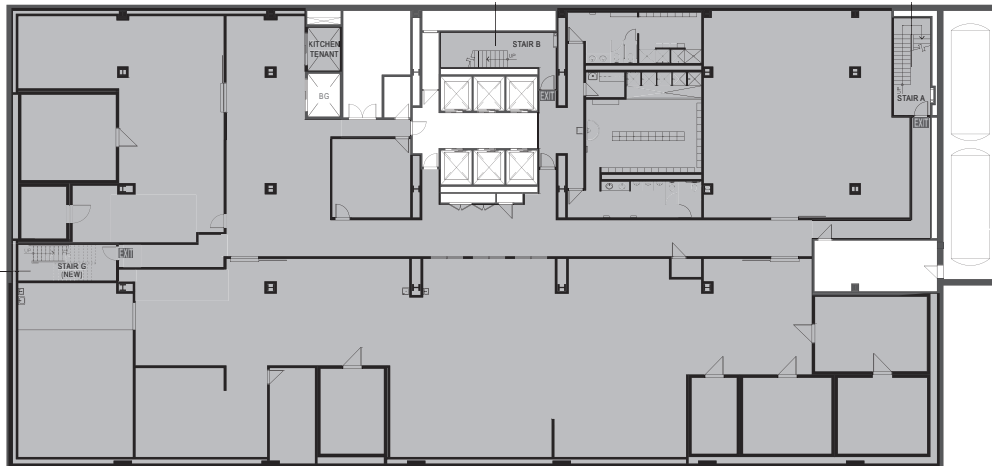
2ND FLOOR | 1,046 SF



GROUND FLOOR | 5,095 SF



SUB CELLAR | 17,640 SF



FOR MORE INFORMATION,
PLEASE CONTACT:

GLENN ISAACSON

President, New York Region
gisaacson@bradfordallen.com
+1 212 593 7105

TONY BUILDER

Associate, Realty Services
tbuilder@bradfordallen.com
+1 212 593 7106

MATTHEW EZERSKY

Associate, Realty Services
mezersky@bradfordallen.com
+1 212 593 7109

BA BRADFORD
ALLEN