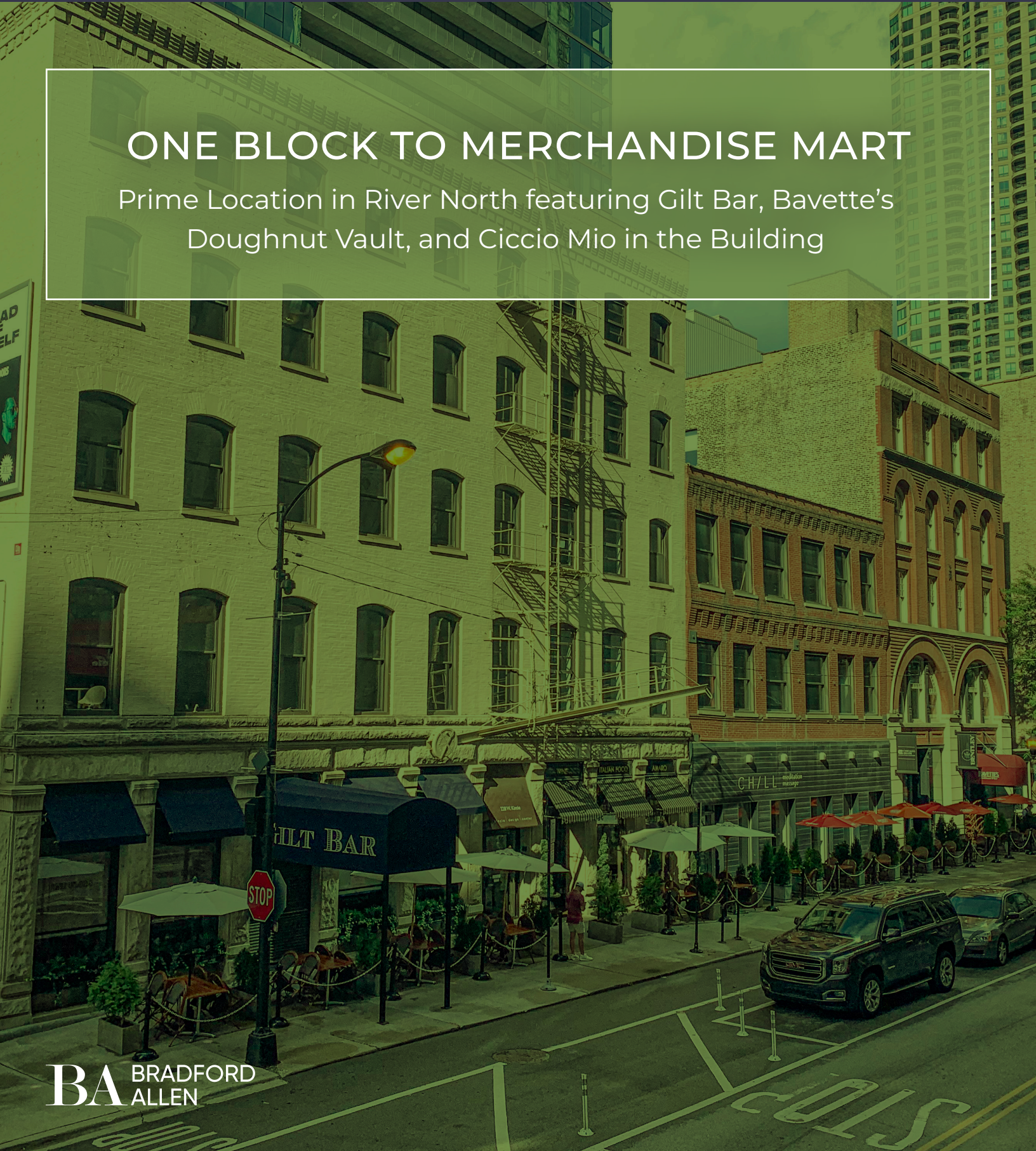
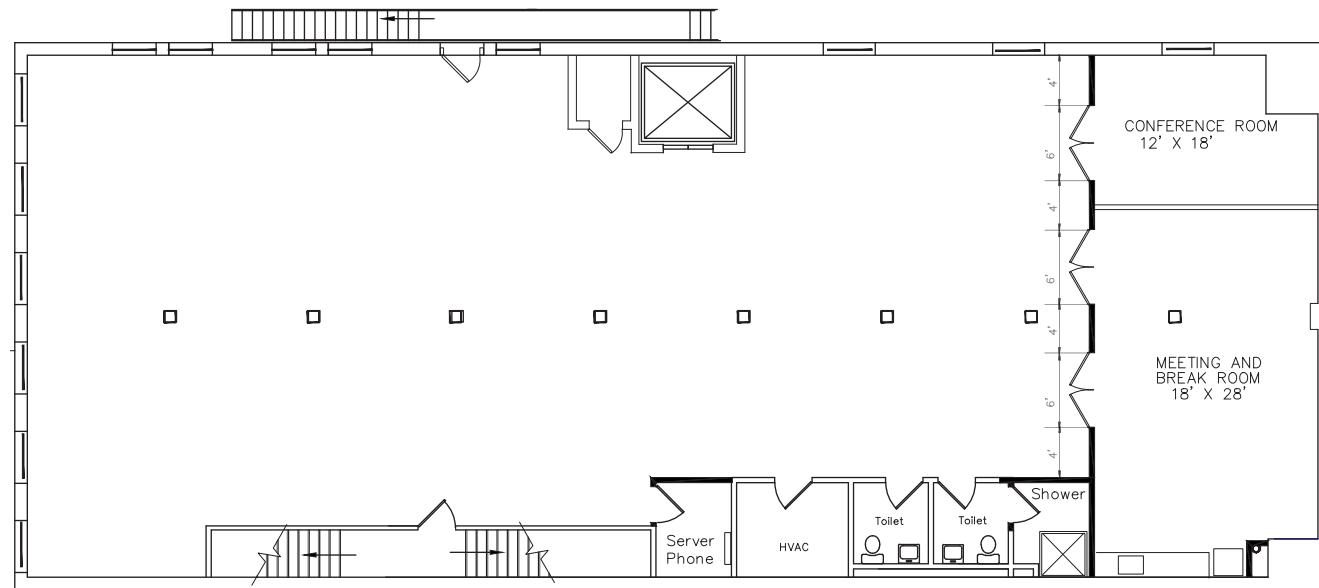


ONE BLOCK TO MERCHANDISE MART

Prime Location in River North featuring Gilt Bar, Bavette's Doughnut Vault, and Ciccio Mio in the Building



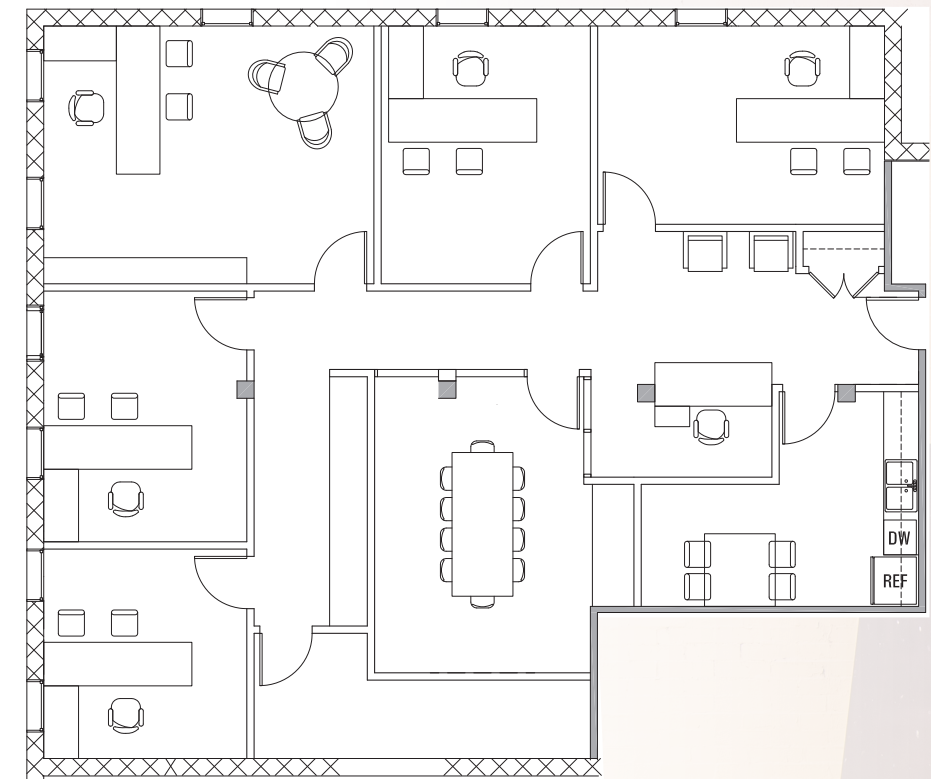
SUITE 200 | 4,348 RSF



FEATURES

- Large conference room/private office 12x18 •
- Large break room/conference room 18x28 •
- Open plan with private restroom and shower •
- Space is accessible via elevator and via walk-up •
- Street-level door signage available on Kinzie •

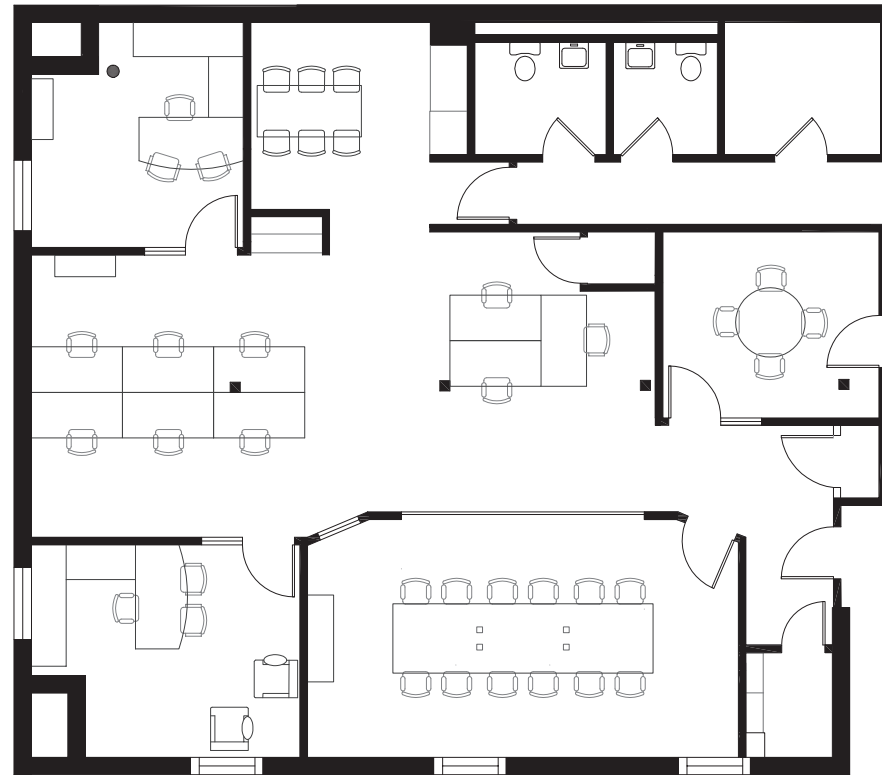
SUITE 4S | 2,174 RSF



FEATURES

- Full-floor timber loft •
- 5 private offices •
- Reception area •
- Conference room 12x17 •
- Kitchenette 18x12 •
- Storage 4x18 •

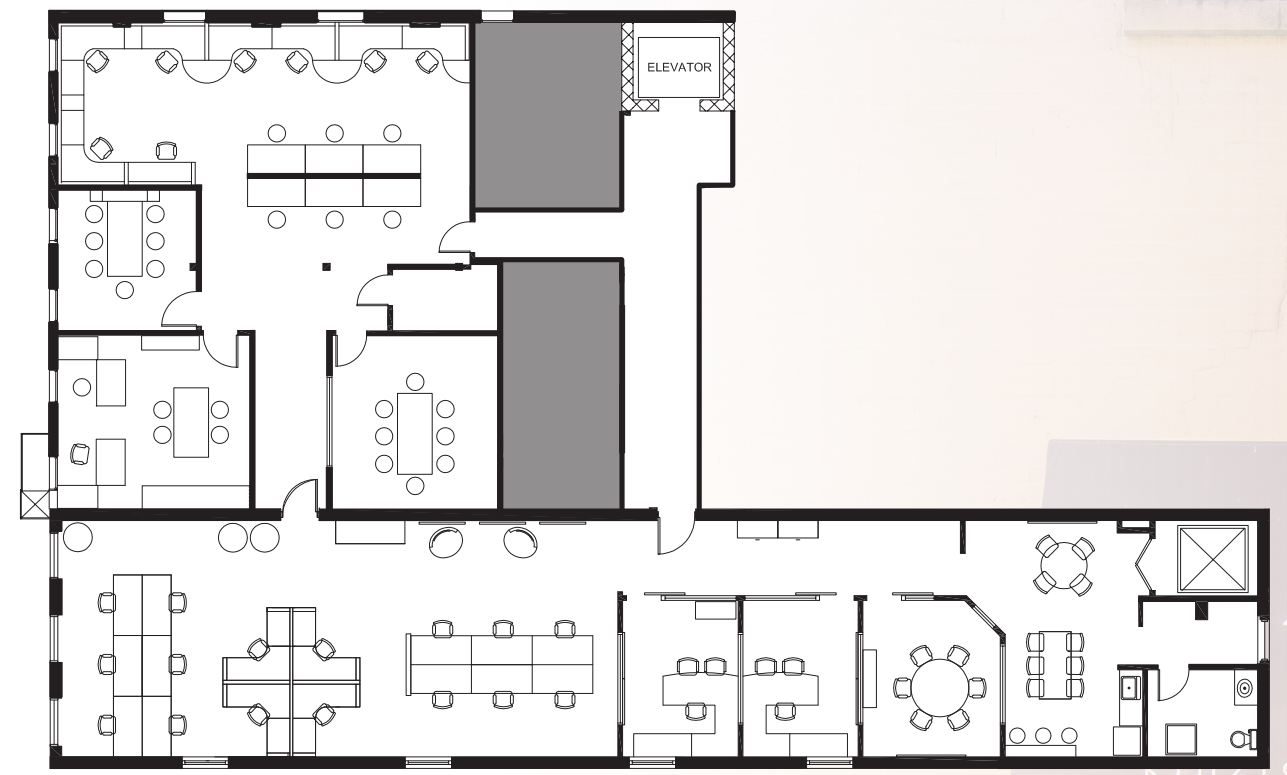
SUITE 5N | 2,174 RSF



FEATURES

- Plug-and-play space that can be demised •
- Nearby Notable Bars & Restaurants •
- Close Proximity to Ogilvie, Union Station and Merchandise Mart CTA Stop •

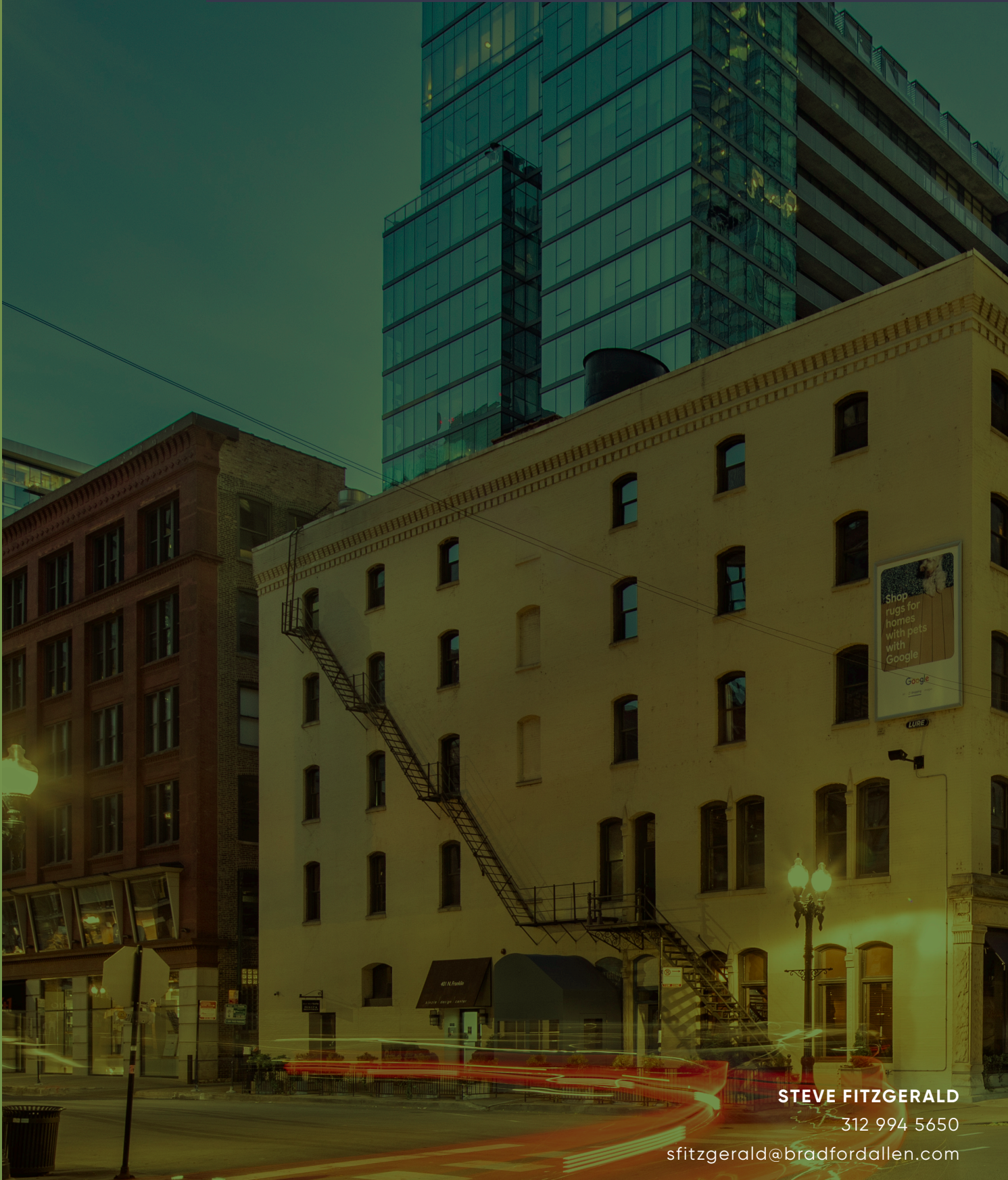
SUITES 5E + 5S | 2,100 + 1,900 RSF



FEATURES

- Currently contiguous at 4,000 RSF •
- Plug-and-play space that can be demised •
- Nearby Notable Bars & Restaurants •
- Close Proximity to Ogilvie, Union Station and Merchandise Mart CTA Stop •

kinzie | design | center



BRADFORD
BA
ALLEN

Shop
rugs for
homes
with pets
with
Google

Google

LURE

STEVE FITZGERALD

312 994 5650

sfitzgerald@bradfordallen.com