

POINTE O'HARE

9550 W. HIGGINS ROAD
ROSEMONT, IL

JOEL BERGER

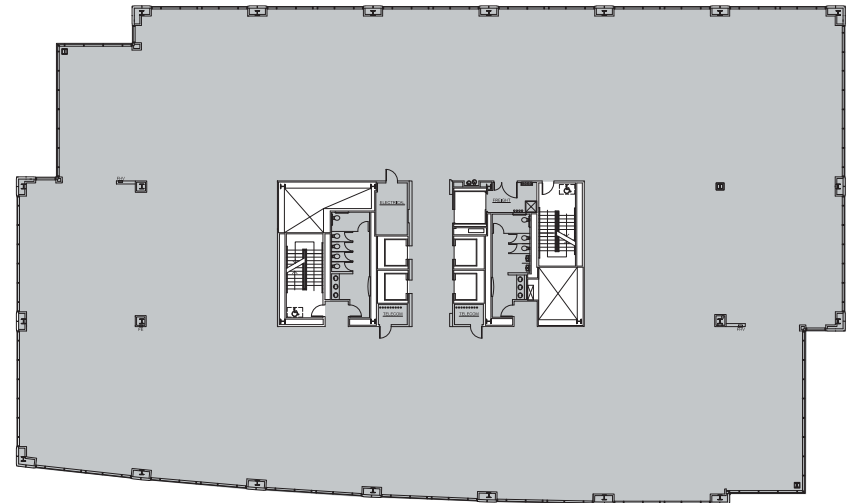
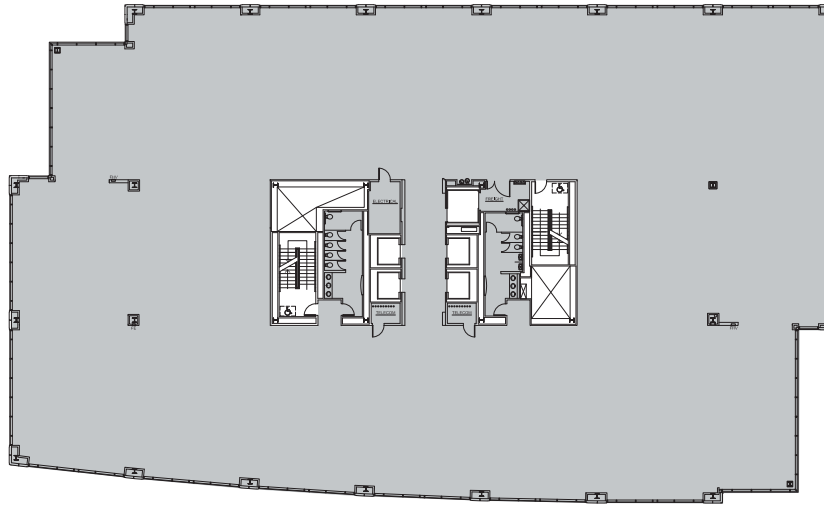
Senior Managing Director
(630) 225 2600 | jberger@bradfordallen.com

STACY DITKA

Associate
(312) 480 1886 | sditka@bradfordallen.com

POINTEOHARE.COM

Suite 600 & 700 Contiguous 52,478 RSF



BA BRADFORD
ALLEN